

Case - Nygårdsparken

Fyrirlestur og umræður



Reykjavik – Norræna húsið
Landslagsarkitekt Sara Waagen i Bergen
26. April 2018

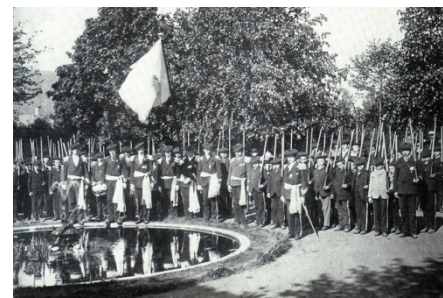
Location

- In the city center
- Ca 17,5 acres

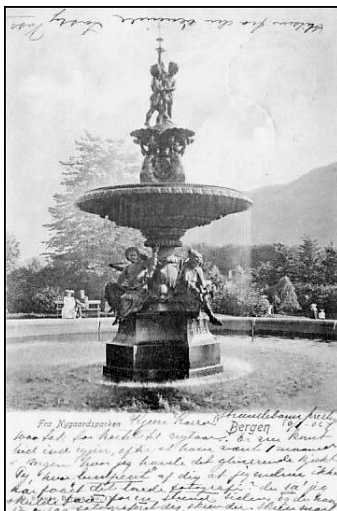


Historical view

«Free, healthy and sheltered
refuge for the people of the
city»



Historical view



Bergen exhibition 1989



KRÖPELIENS RESTAURANT.



FRIELES KAFFE PAVILLON.



OVERSICHTSBILLEDE.

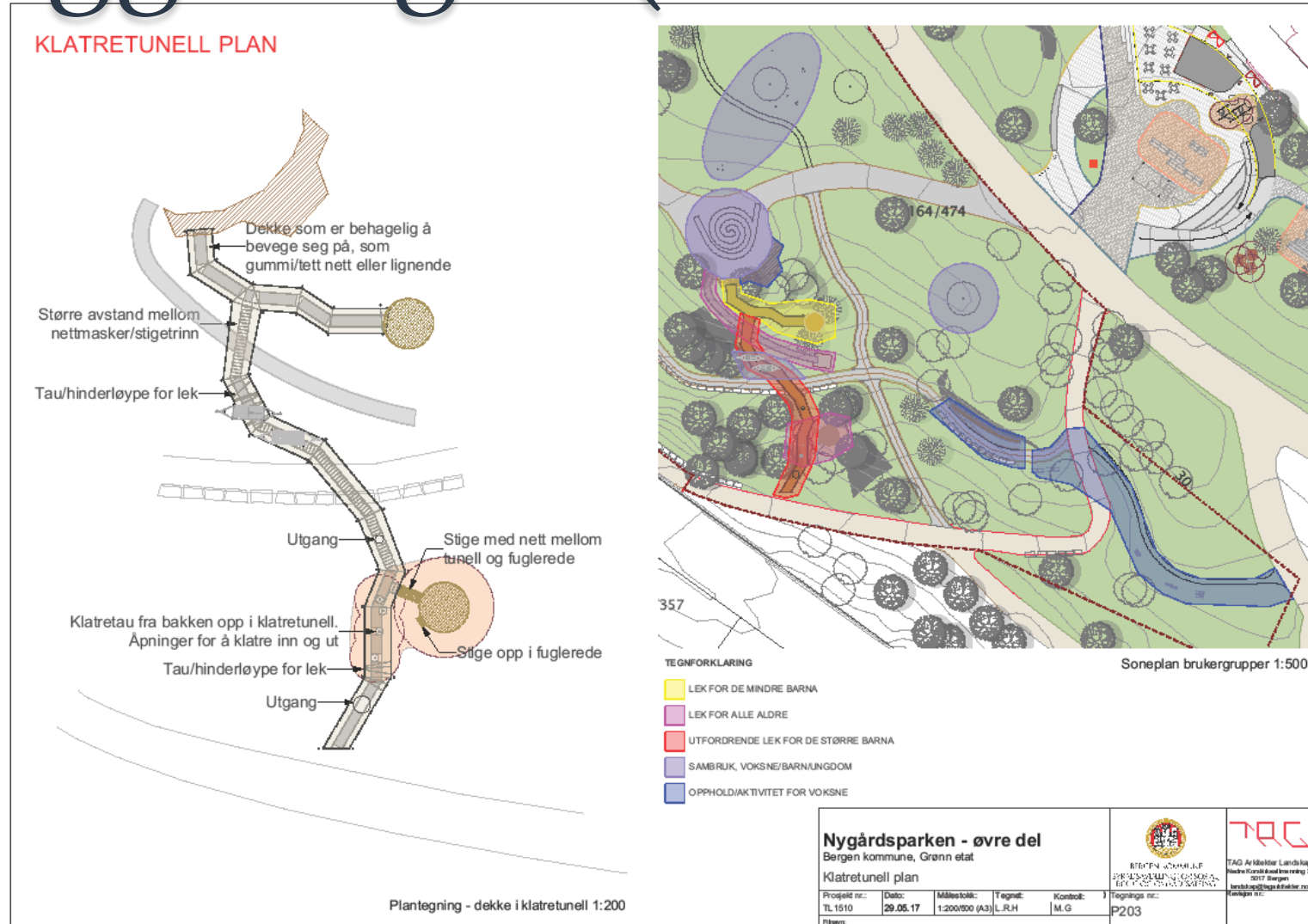


HOVEDRESTAURANTEN.

Upper part closed in 2014



The new play area on Flaggghaugen (autumn 2018)



The new «Knutepunktet»



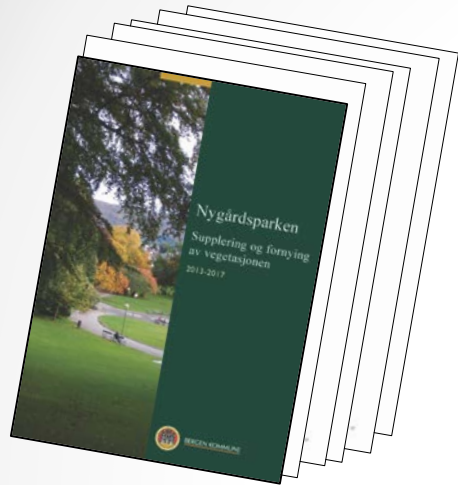
The new «Knutepunktet»



Old paths rebuilt



Vegetation



Comprises trees and open lawns in harmony with the topography of the area



Active park



Planning in a historical park

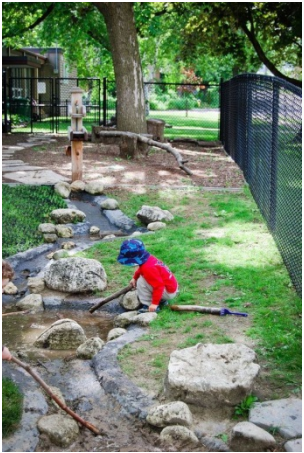
Balance between upgrading existing content and adding new elements



Restoration

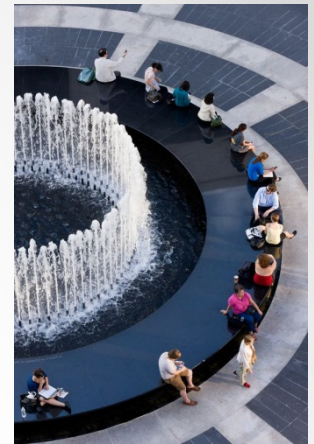
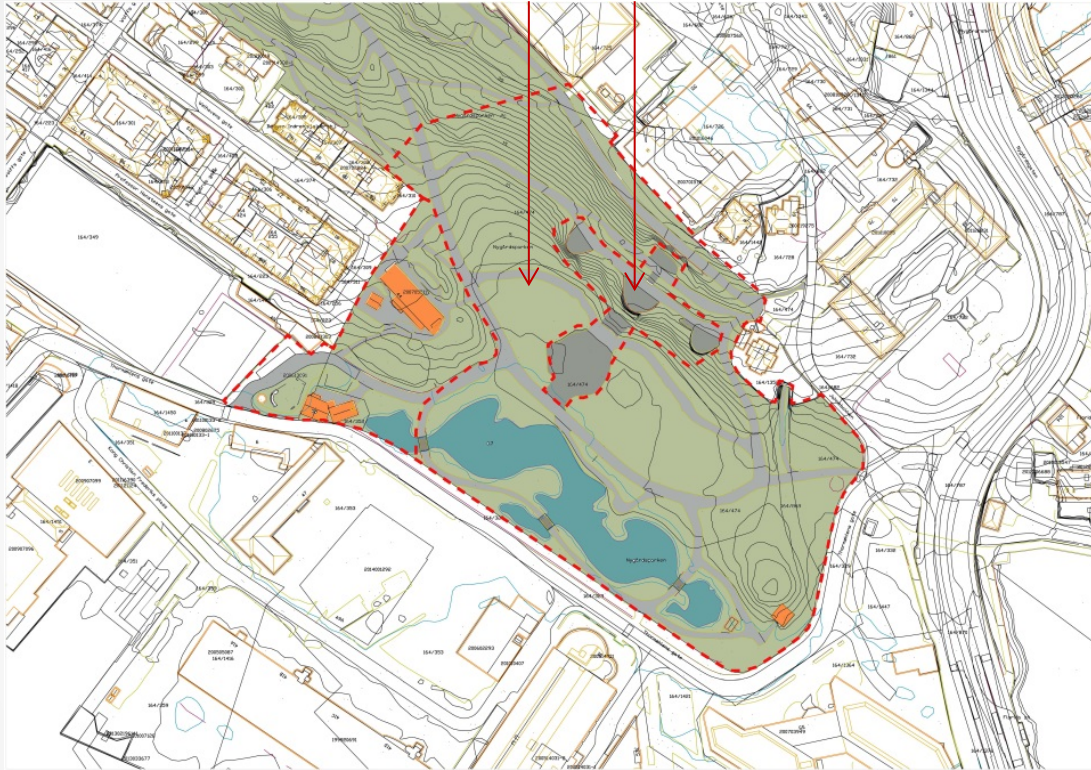


Rebuilt the play area for kids and youth



The big lawns and the fountain

Restoration area



The to-do list



2018:

- Complete the play-area in the upper part
- Restore the fences
- Start replacing luminare: «Bergenslykt» as lightning
- Drainage of the lawns
- Opportunity study of the fountain-and stairs area, and of the new play-area in the lower part based on our mapping and sketching. Engaging consultant

2019 - 2021

- Continue installing «Bergenslykt»
- Upgrade the pedestrian walks, Hopefully, replace all asphalt surfaces to gravel
- Upgrade and restore the fountain- and stairs area
- Start building the new play-area when the kindergarden is removed.





Thank you for your attention

